

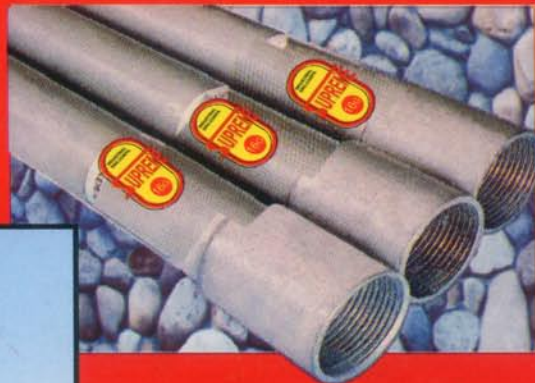
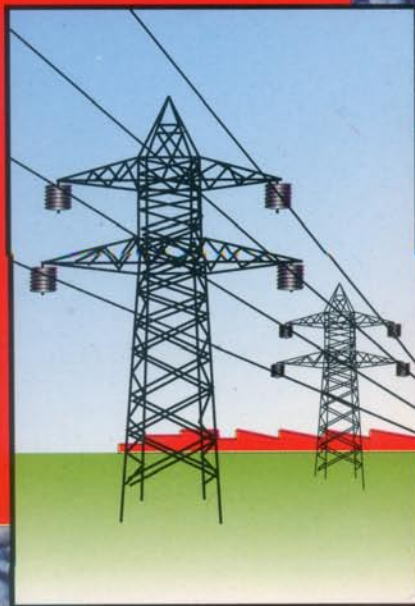
Ensure Reliable Mechanical Protection to Your Cables. Insist on

Supreme BRAND ERW Rigid Steel Conduits

The No. 1

Choice of Contractors
Architects &
Electrical Consultants

AVAILABLE IN
19 MM
20MM
25MM
32 MM
40 MM
50 MM
63 MM
NOMINAL SIZES.



AVAILABLE IN
19 MM
20MM
25MM
32 MM
40 MM
50 MM
63 MM
75 MM
100 MM
NOMINAL SIZES.



✓ BLACK STOVE ENAMELLED
✓ HOT DIP GALVANISED
CONDUIT PIPES, FITTINGS
OTHER ELECTRICAL ACCESSORIES.

TESTED FROM NATIONAL TEST HOUSE, ALIPORE.

'SUPREME'

"BRAND CONDUIT" PIPES
stove enamelled finish both
in side /out side under dipping
process on electro stove
enamelling plant for extra
long life, both ends threaded
with coupling on one side.

Our Company

Industrial Engineering Corporation has been Set UP in 1954 to manufacture high quality Supreme make ERW Rigid steel conduits strictly as per IS: 9537 Part-2 specifications. In accordance with the B. S. 31 of 1940 "Supreme" Conduit are in use through out India since 1954 and have proved to be of Superior quality for the perfect accuracy of diameter and uniform wall thickness.

Our Moto

1. In order to see that the effort of our technical team are not wasted, we have provided them with state - of - the - art Production set - up with all modern process controls.
2. It is our sincere effort to provide a reliable and quality product to our consumers.
3. In our pursuit for excellence we also provide a very strict quality plan and a very stringent quality assurance system.

Our Product Range

Made from best quality mild steel. SUPREME rigid Steel Pipes are available in sizes from 19mm to 63 mm with two type of protective coatings against external Influences,
(I) Stove Enamelled for medium Protection. (Both Inner & Outer Surfaces)
(II) Hot Dip galvanized for Heavy Protection. (Both Inner & Outer Surfaces)

Production Range includes :

M. S. PIPES STRUCTURAL & FURNITURE TUBES
PLAIN ENDS, UNPAINTED.
IN ALL SIZES.

TESTED FROM NATIONAL TEST HOUSE, ALIPORE.

TECHNICAL DETAILS FOR 'SUPREME' RIGID STEEL CONDUITS

SUPREME RIGID STEEL CONDUITS MADE TO IS : 9537 (PT-II) 1981 SPECIFICATIONS DIMENSIONAL REQUIREMENTS

NORMAL SIZE IN MM	20	25	32	40	50
Outside Diameter (mm)	20	25	32	40	50
Tolerance on outside diameter (mm)	-0.30	-0.40	-0.40	-0.40	-0.50
Minimum Outside diameter (mm)	19.70	24.60	31.60	39.60	49.50
Wall thickness					
(a) Minimum (mm)	1.40	1.40	1.40	1.60	1.60
(b) Maximum (mm)	1.80	1.80	1.80	2.20	2.20

MAXIMUM CAPACITY OF 'SUPREME' BRAND RIGID STEEL CONDUITS FOR DRAWING PVC INSULATED CABLES CONFIRMING TO IS :694-1990

SIZE OF CONDUIT	20 mm	25 mm	32 mm	40 mm	50 mm
NOMINAL AREA OF CABLE CONDUCTOR SQ. MM	NUMBER OF CABLES				
1.5	4	6	10	---	---
2.5	4	6	10	---	---
4	3	5	10	---	---
6	2	3	7	14	---
10			5	11	---
16			3	7	---
25				4	6
35				4	6
50				3	5

Special Features

- ✓ Unexcelled Finish
- ✓ Withstand bending without the slightest falking .
- ✓ Free from burrs, dents and internal roughness
- ✓ Special point bonding ensure complete resistance to corrosin and heat

TESTED FROM NATIONAL TEST HOUSE, ALIPORE.

TESTS TO CHECK RIGID STEEL CONDUITS CONFORMING TO IS : 9537 (PART-II) 1981

'SUPREME'

ERW Rigid Steel Conduits
For total protection to your
wires & Cables



S. No .	Name of Test	Mode of Testing
1.	Wall Thickness	With the help of Vernier Micro Meter
2.	Inspection of Surfaces & Edges	Visual Examination (By Normal or Corrected Vision without Magnification)
3.	Inspection of Marking	Brand name, Nominal Size & Country of Origin on each length
4.	Durability of Marking	Compliances Tested by method as mentioned in IS : 9537 Specifications.
5.	Bending Test	By Bending the samples on Bend Test Apparatus.
6.	Test for Protective coating (For checking the effect of External Influences.)	With the help of Chemical as prescribed in :9537 Specifications. Medium and Heavy Protective Coatings of Rigid Steel Conduits Corrosive effectiveness of the protective coatings.

- ✓ Made from best quality mild Steel.
- ✓ Isometric threads.
- ✓ High dimensional accuracy.
- ✓ (ERW) Tube welding process .

- ✓ Minimum internal beads.
- ✓ Hot dip galvanized for heavy protection
- ✓ Stove enamelled for medium protection
- ✓ Protective coating on external as well as internal surfaces.

AVAILABLE AT :

JSC JAVERI SALES CORPORATION
192, (Old 149), Govindappa St., Chennai-600001.
☎ 25369716, 25369853, 25384465 Fax: 25363559
e mail : jsc@vsnl.com Web : www.javeri.com

TESTED FROM NATIONAL TEST HOUSE, ALIPORE.